



TOYOTA

ALWAYS A
BETTER WAY

PROACE & PROACE VERSO

Wind deflectors - Front set

Installation Instructions

Model year: 2016/02, 2016/03

Vehicle code: M*****-LB***W

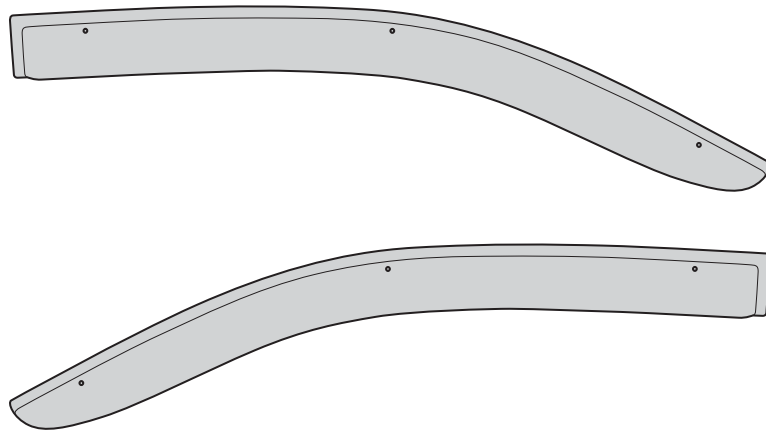
Part number: PZ4L1-H0531-00
PZ4L1-H0531-60 Fitting kit

Manual reference number: AIM 004 616-0

Revision record

Rev. No.	Date	Page	Step	Remarks

PZ4L1-H0531-00



A

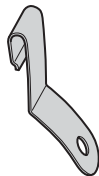
x1

PZ4L1-H0531-60 Fitting kit



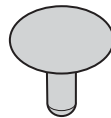
B

x6



C

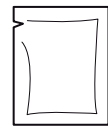
x6



D

x6

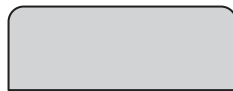
PZ415-00000-00



**3M adhesion promoter
4298 UV**

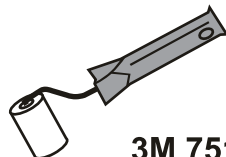
E

x1



F

x12



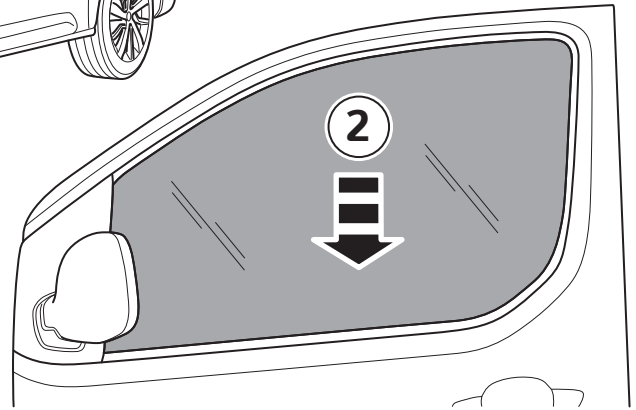
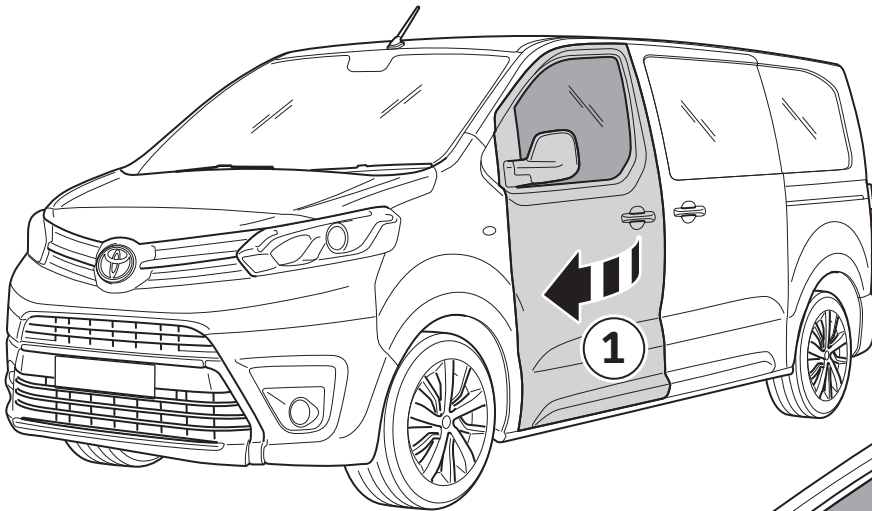
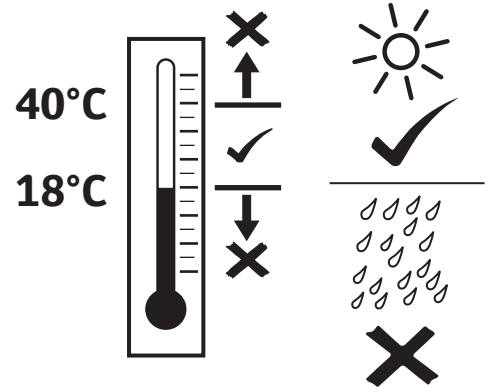
3M 751



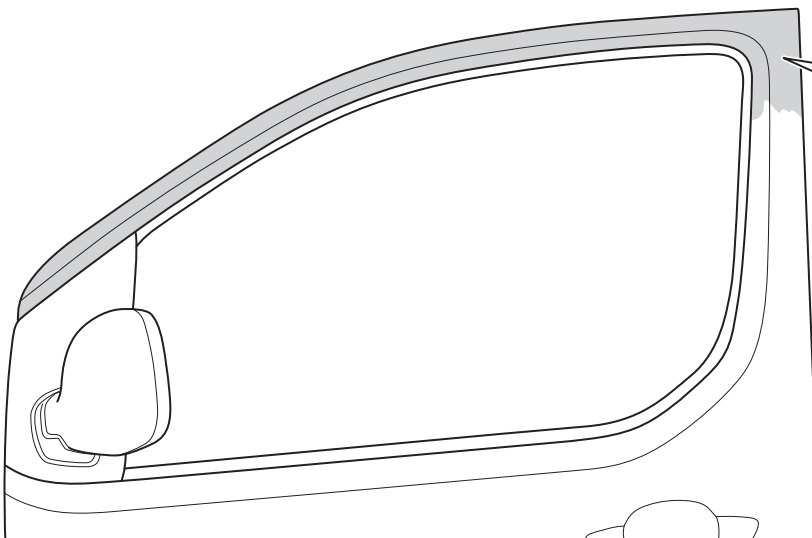
AIM 003 516-*



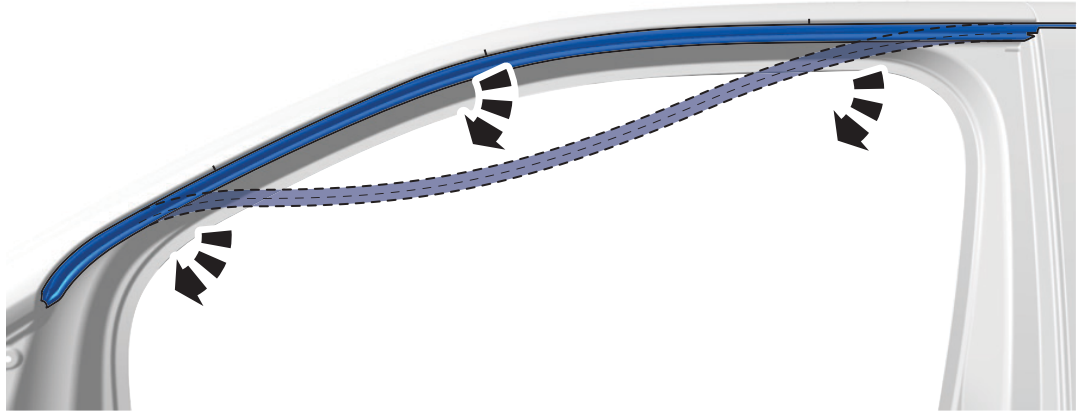
Material Safety Data Sheet



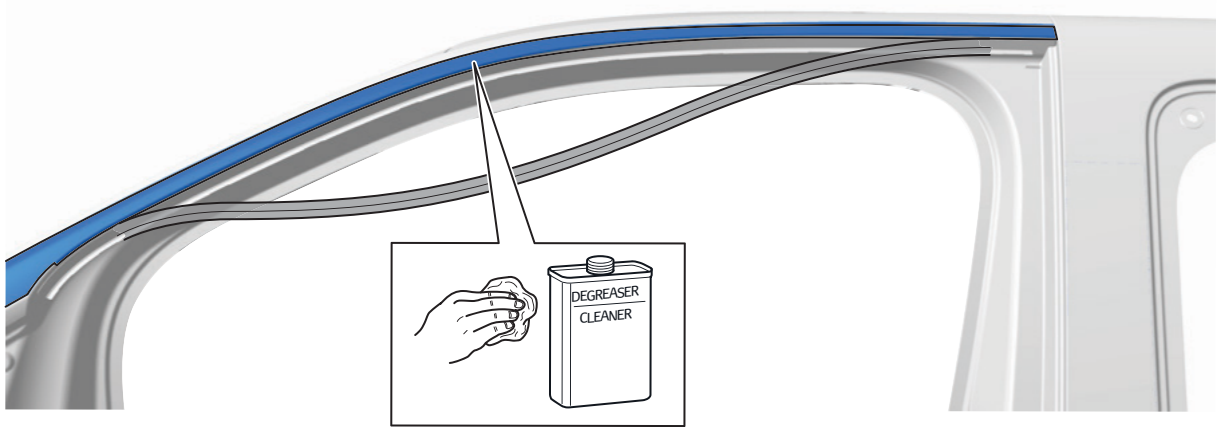
1



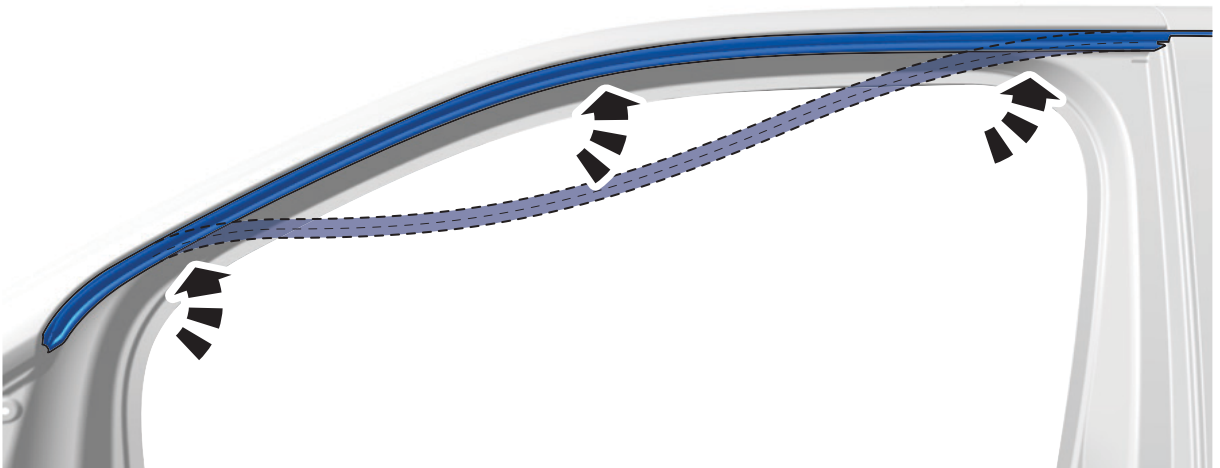
2



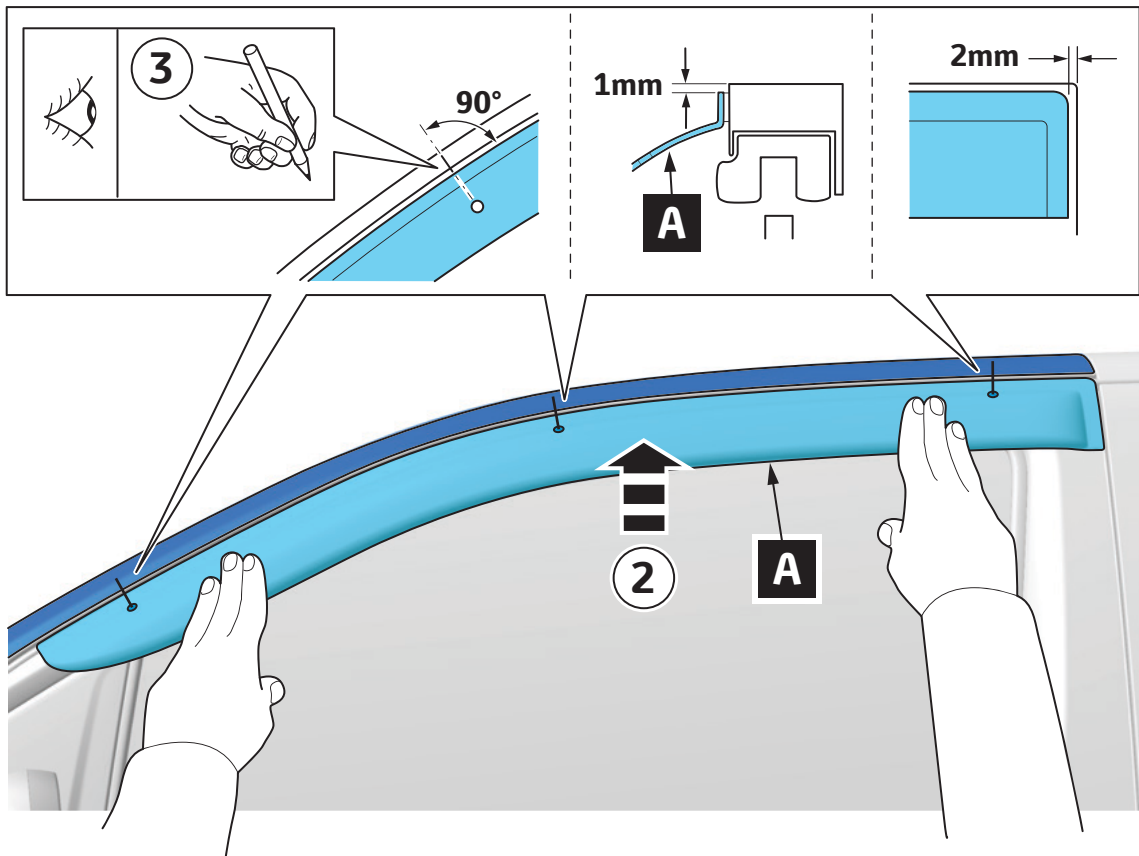
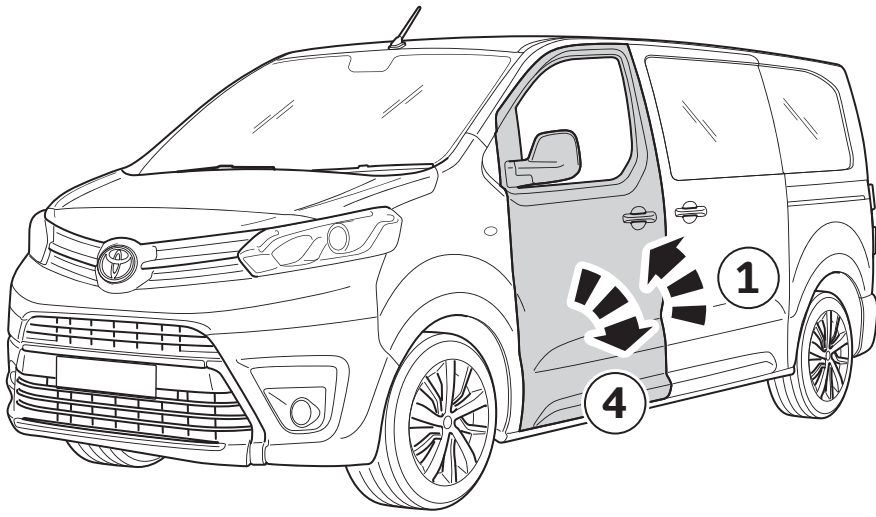
3



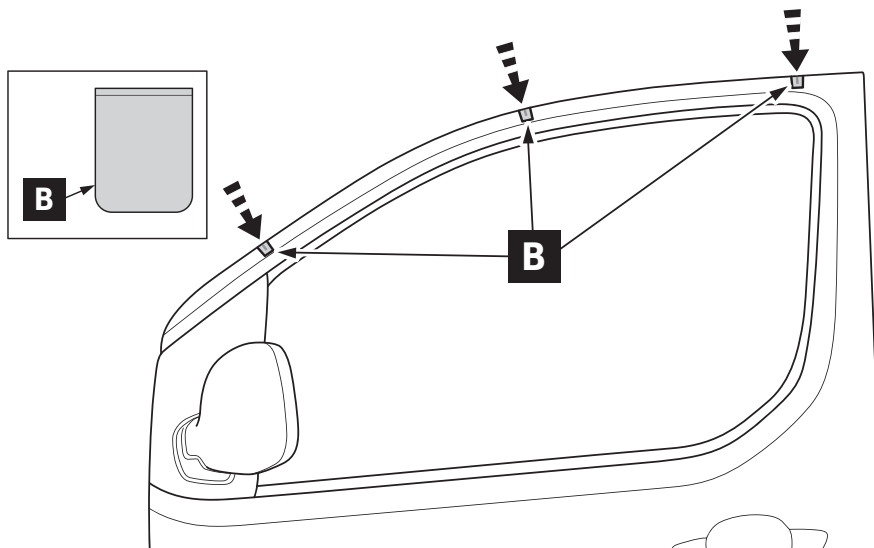
4



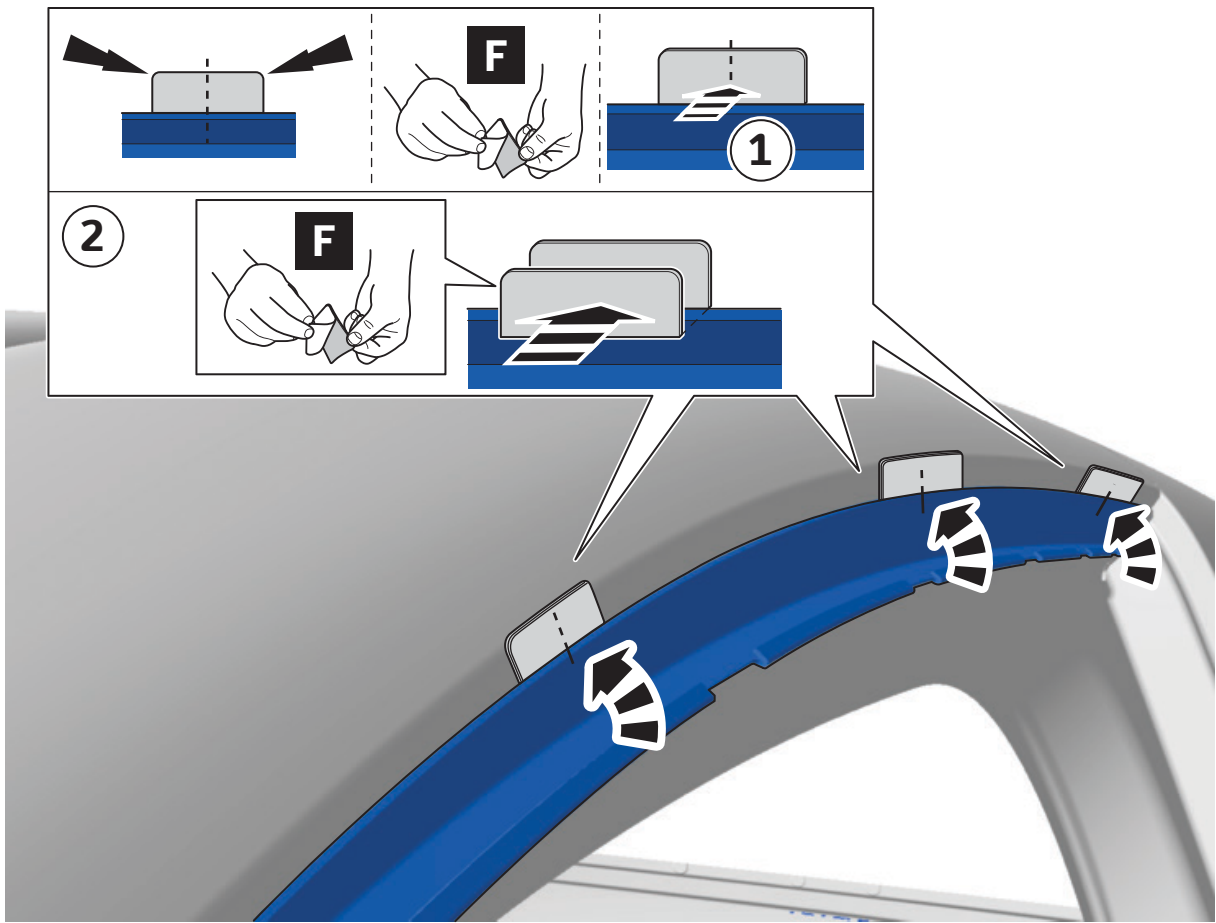
5



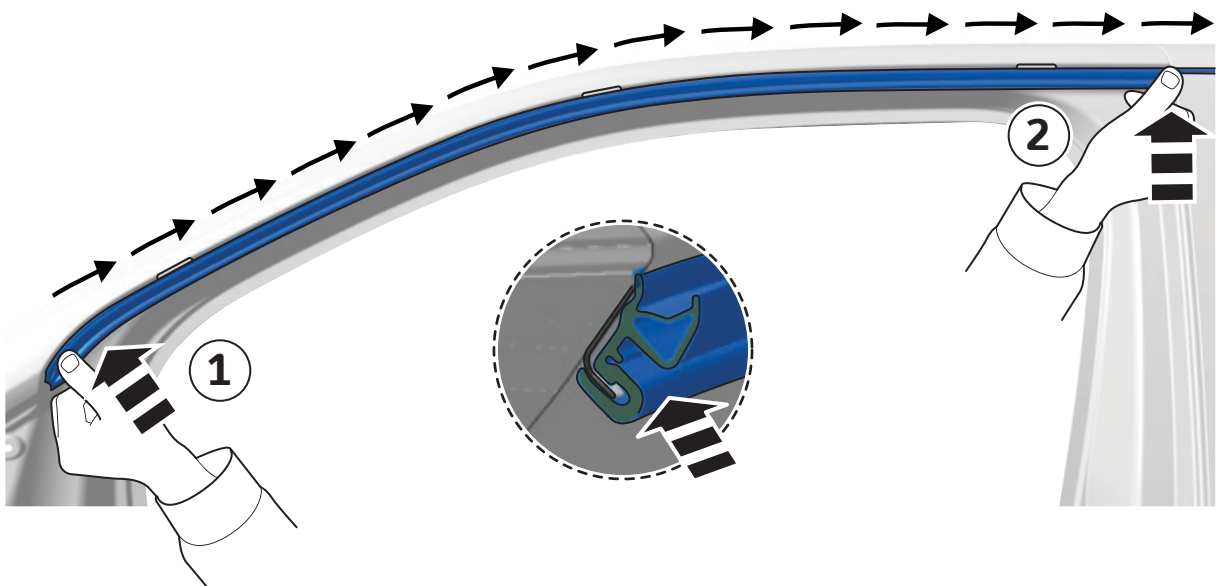
6



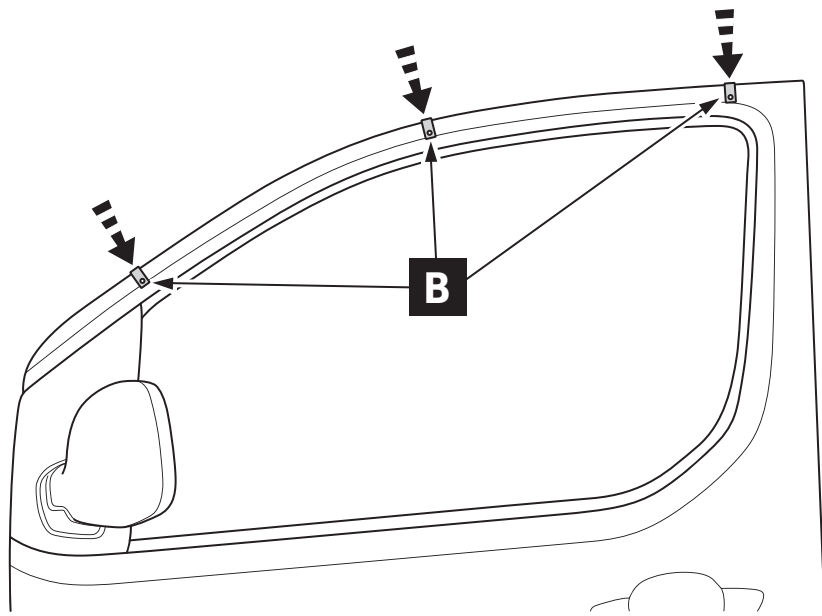
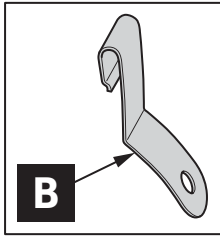
7



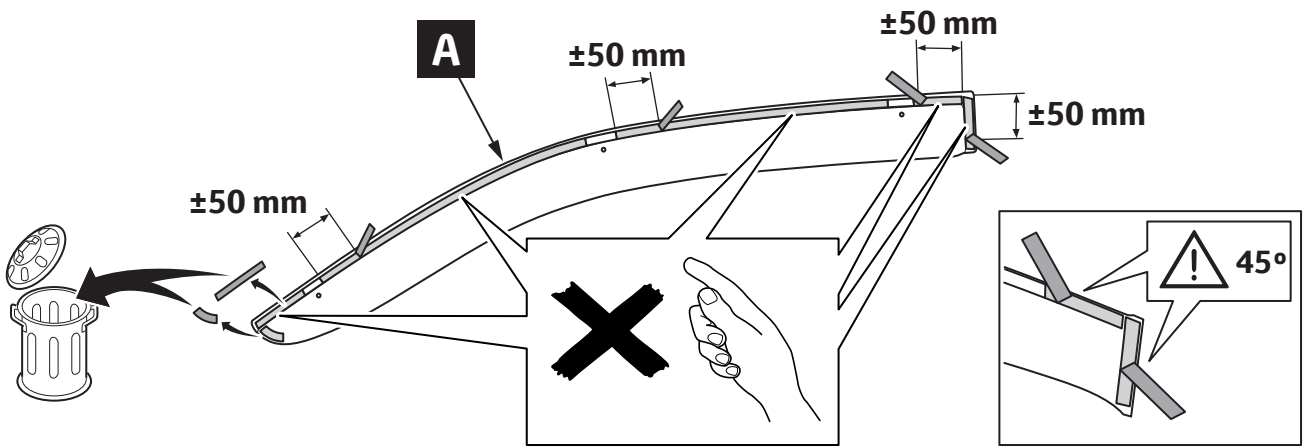
8



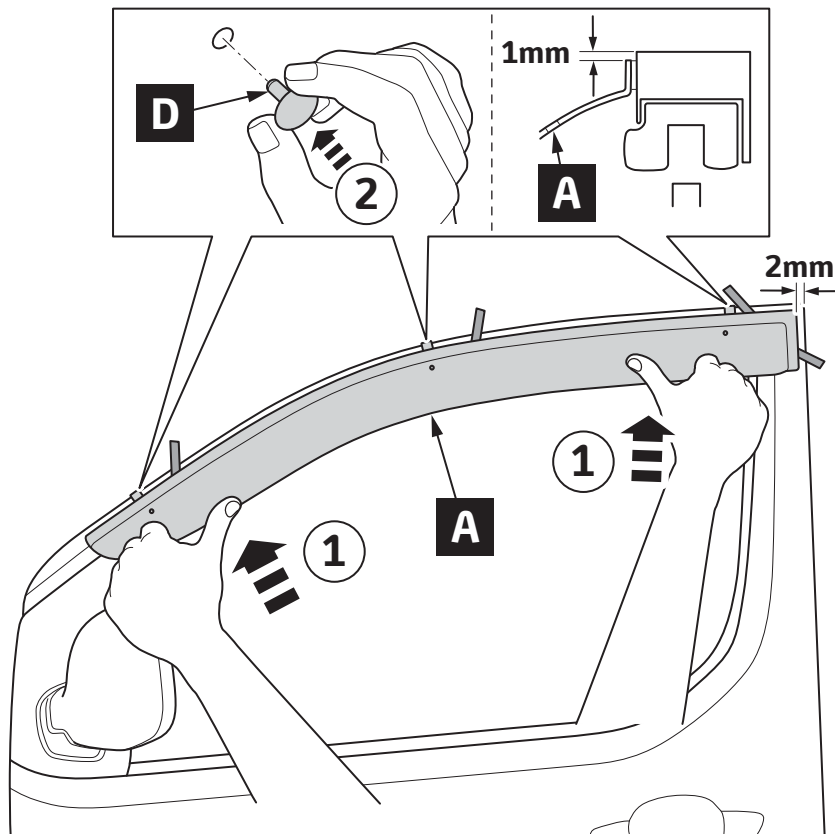
9



10

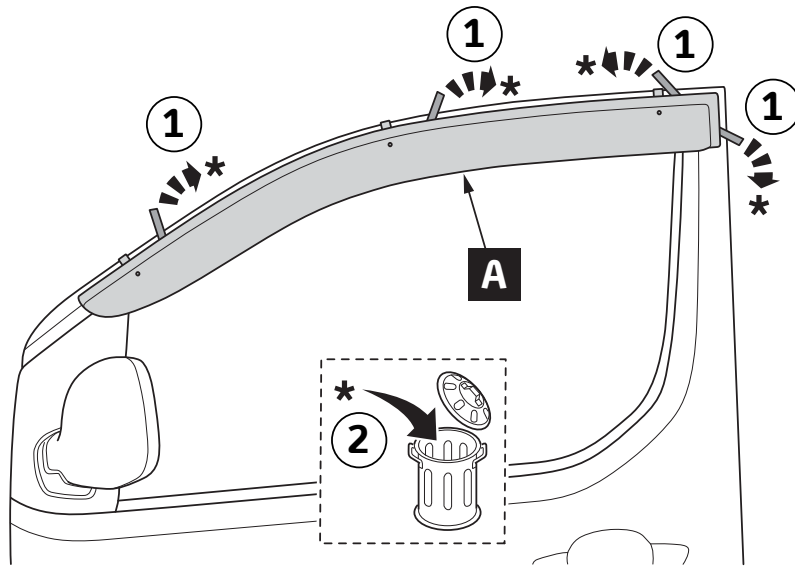


11

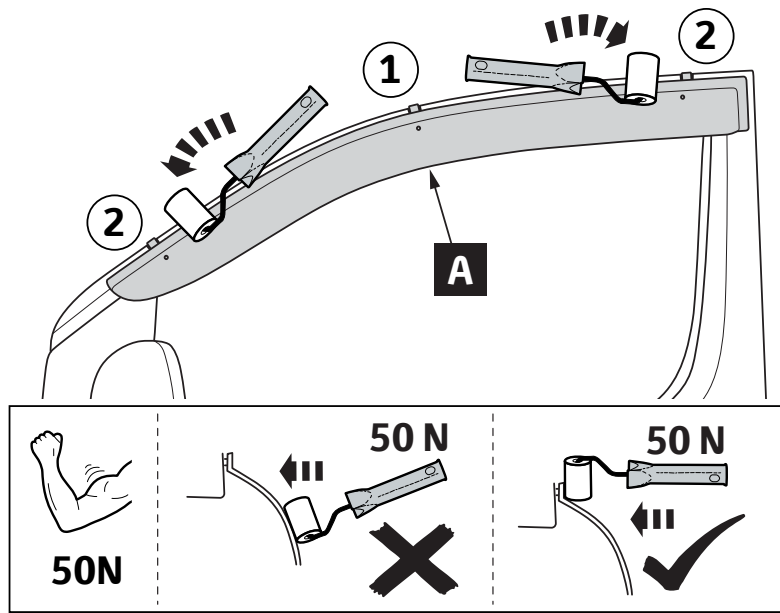


12

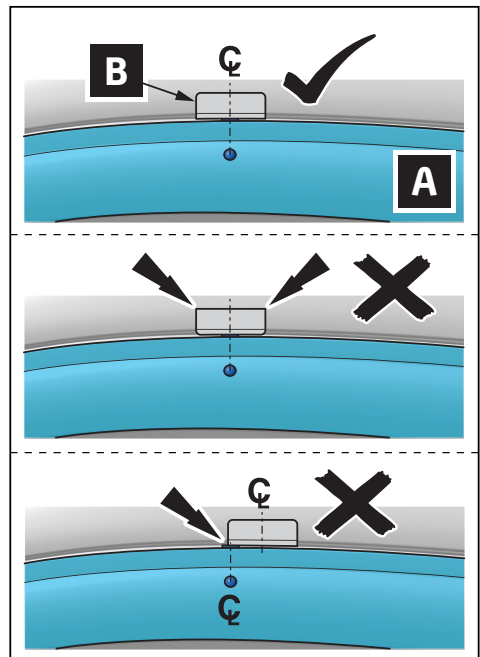
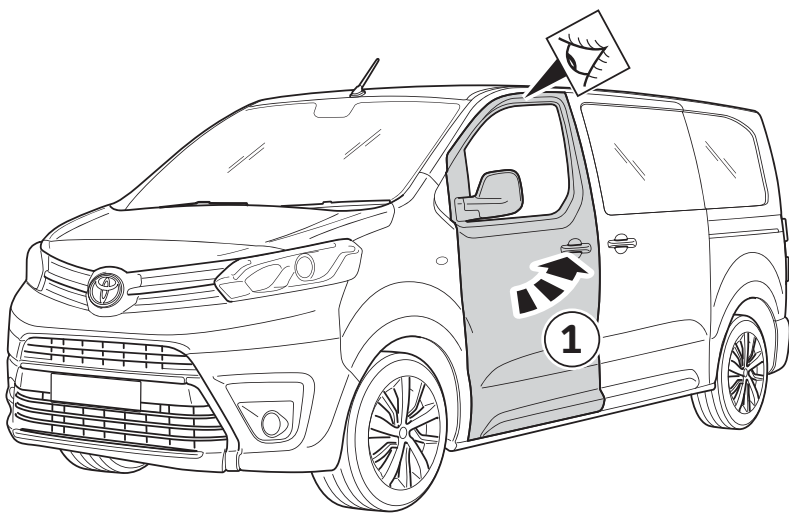
13

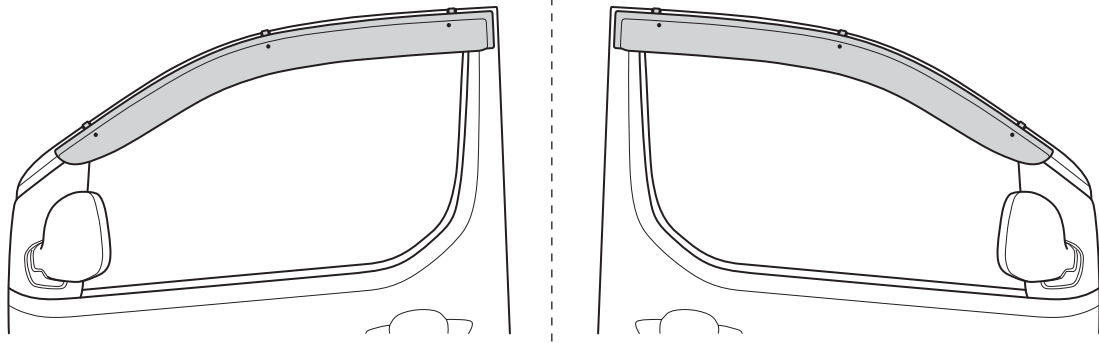


14



15





LHS = RHS

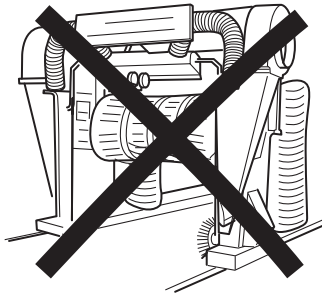


16

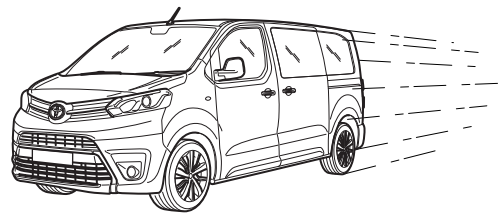
5 min.



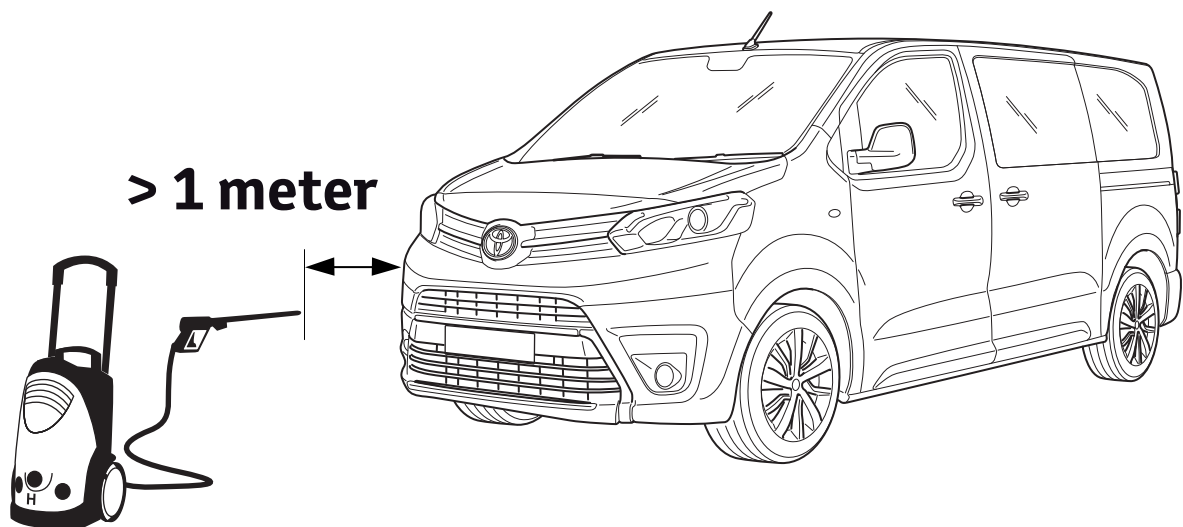
24 h



24 h



Max. 90 Km/h





TOYOTA

CHECK SHEET

Page 1 of 1

Model/Year **PROACE & PROACE VERSO** Wind deflector
2016/02 Front set

VIN n°

ALWAYS A BETTER WAY

DURING INSTALLATION

1 P/N = OK

AFTER INSTALLATION

1 = OK

LHS RHS

1

2 = OK

LHS RHS

3

LHS RHS

4 = OK

Installation Date:
... / ... / ...

Technician Name & Signature:

Stamp:

