

Yaris Cross

Front Mudflaps

Installation Instructions

Model year: As from 2021/05

Vehicle code: MX**1**-BH**BW

Part number: PW389-0D150

Manual reference number: AIM 005 465-0

Latest Version
SCAN HERE



THINK BEFORE YOU PRINT



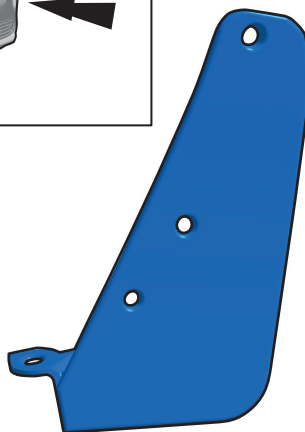
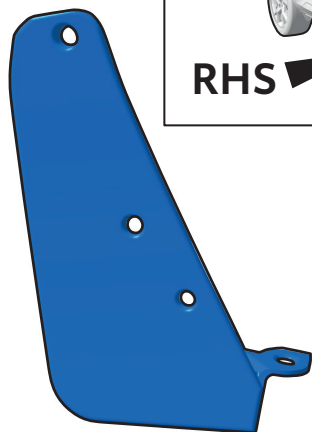
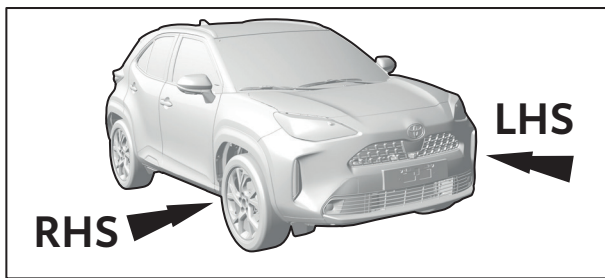
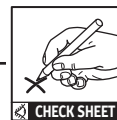
**ONLINE = LATEST VERSION
GO DIGITAL!**

Revision Record

Rev. No.	Date	Page	Step	Remarks

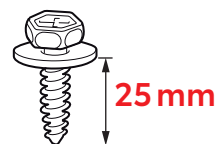
KIT CONTENT

PW389-0D150



Ø6 x 19 mm

C 90169-60602 6x



Ø6.3 x 25 mm

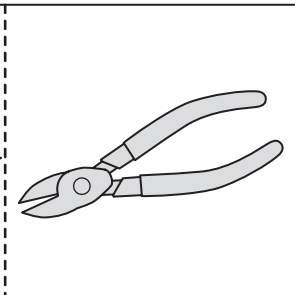
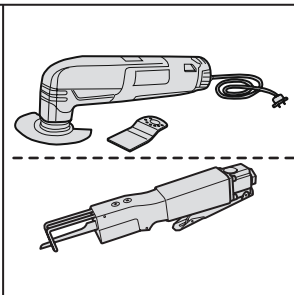
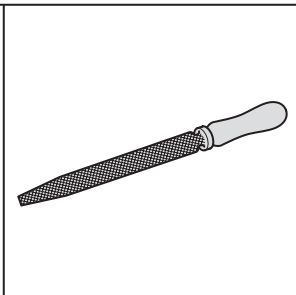
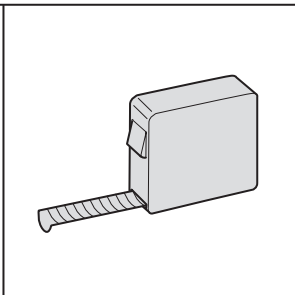
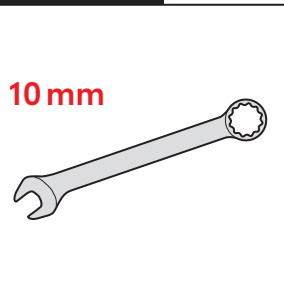
A LHS 1x

B RHS 1x

D 2x



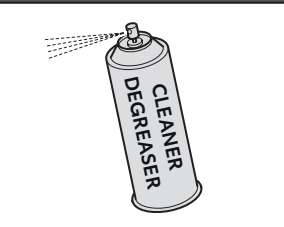
TOOLS



CONSUMABLES

CLEANER /
DEGREASER

MASKING TAPE



USEFUL GENERAL MANUALS

SYMBOLS



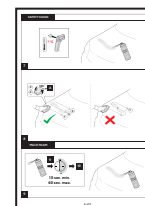
Latest Version
SCAN HERE



CLEANER / DEGREASER



Latest Version
SCAN HERE



GENERAL



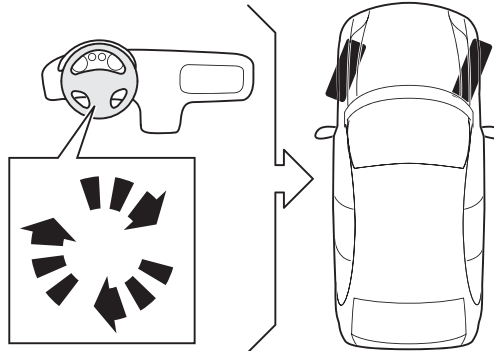
Material Safety Data Sheet



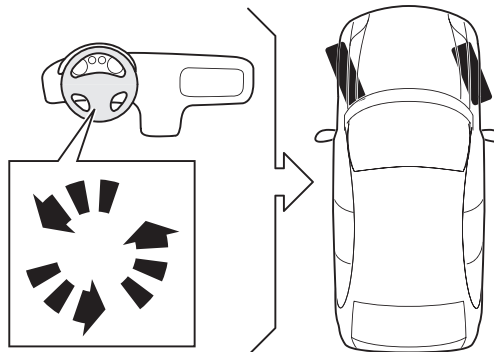
Technical Data Sheet

INSTALLATION INSTRUCTIONS

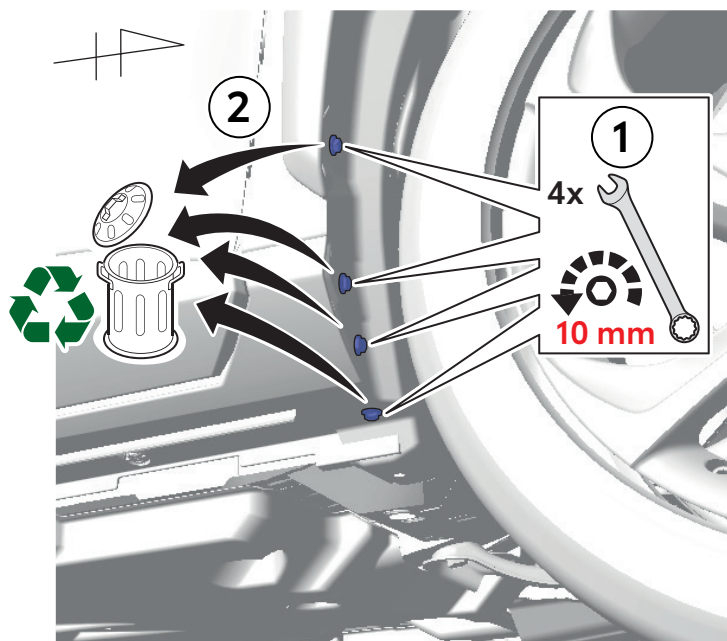
RHS



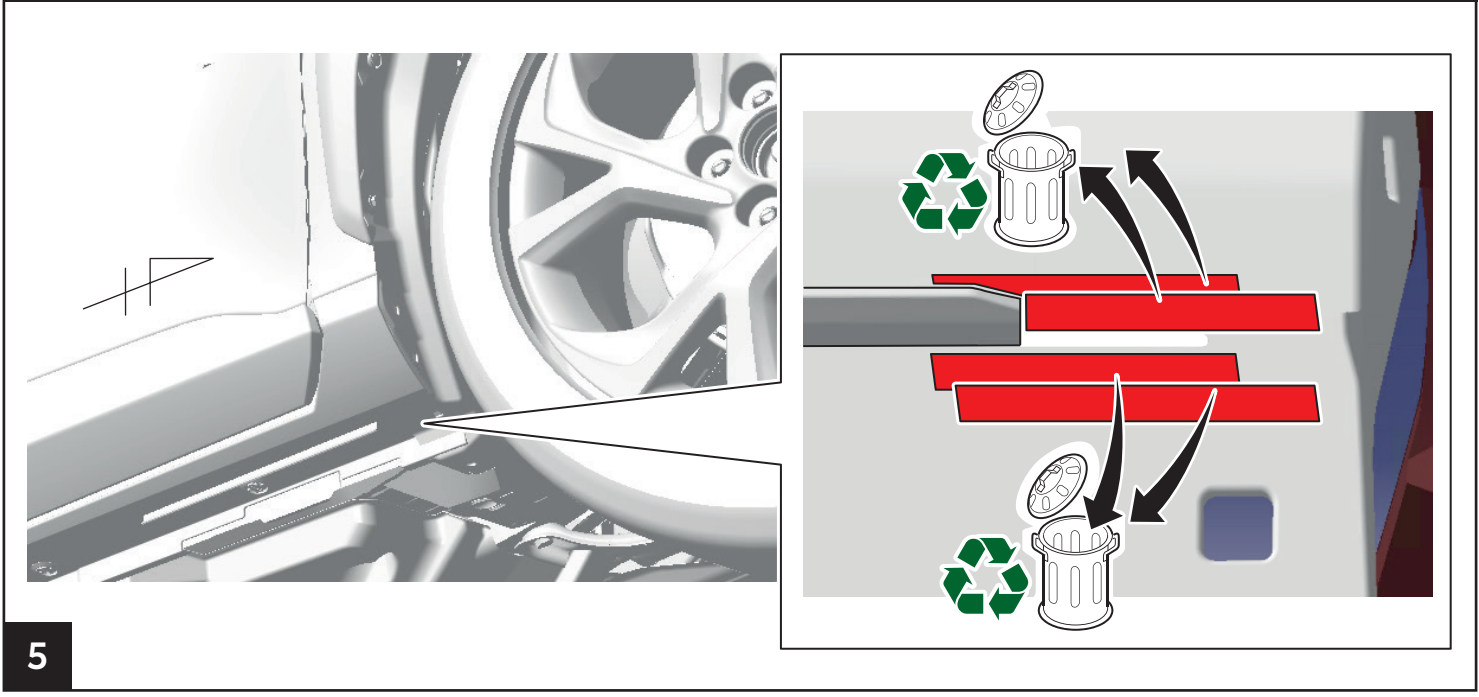
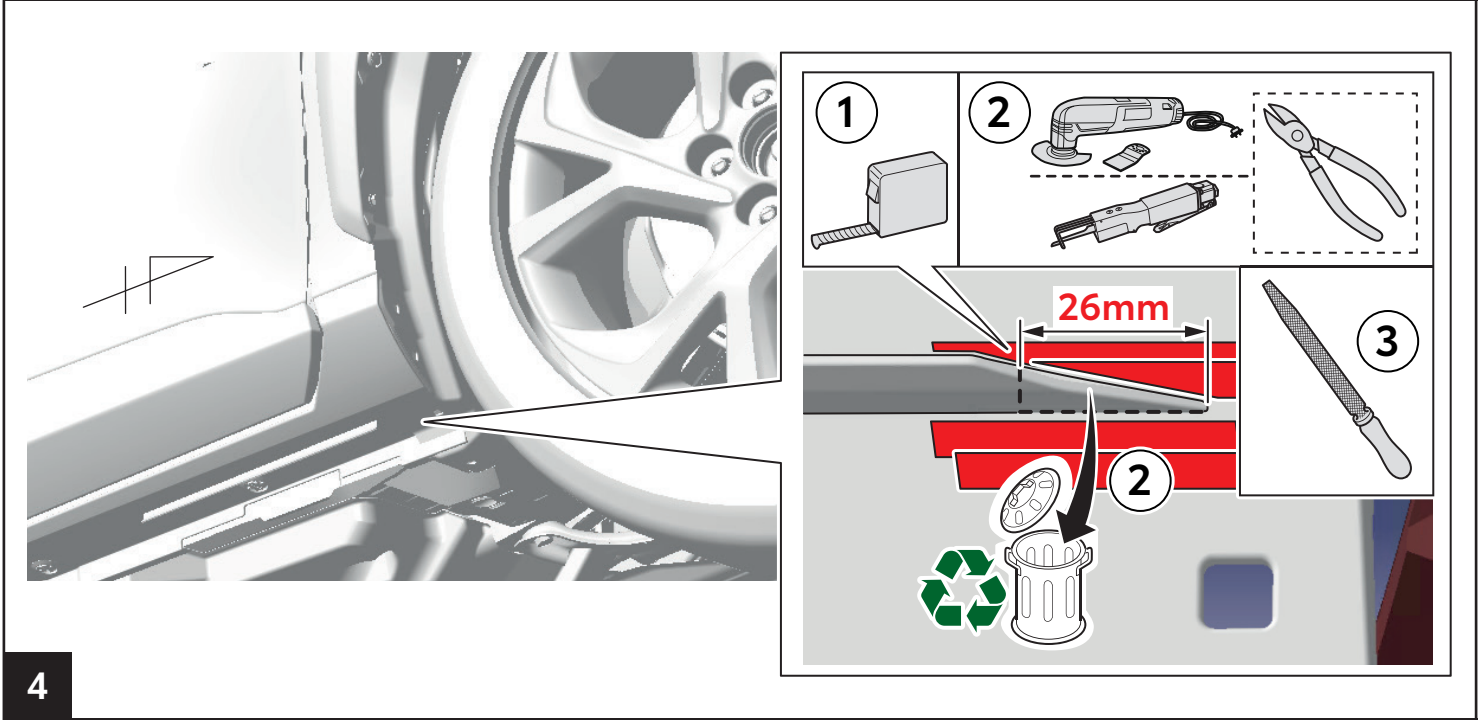
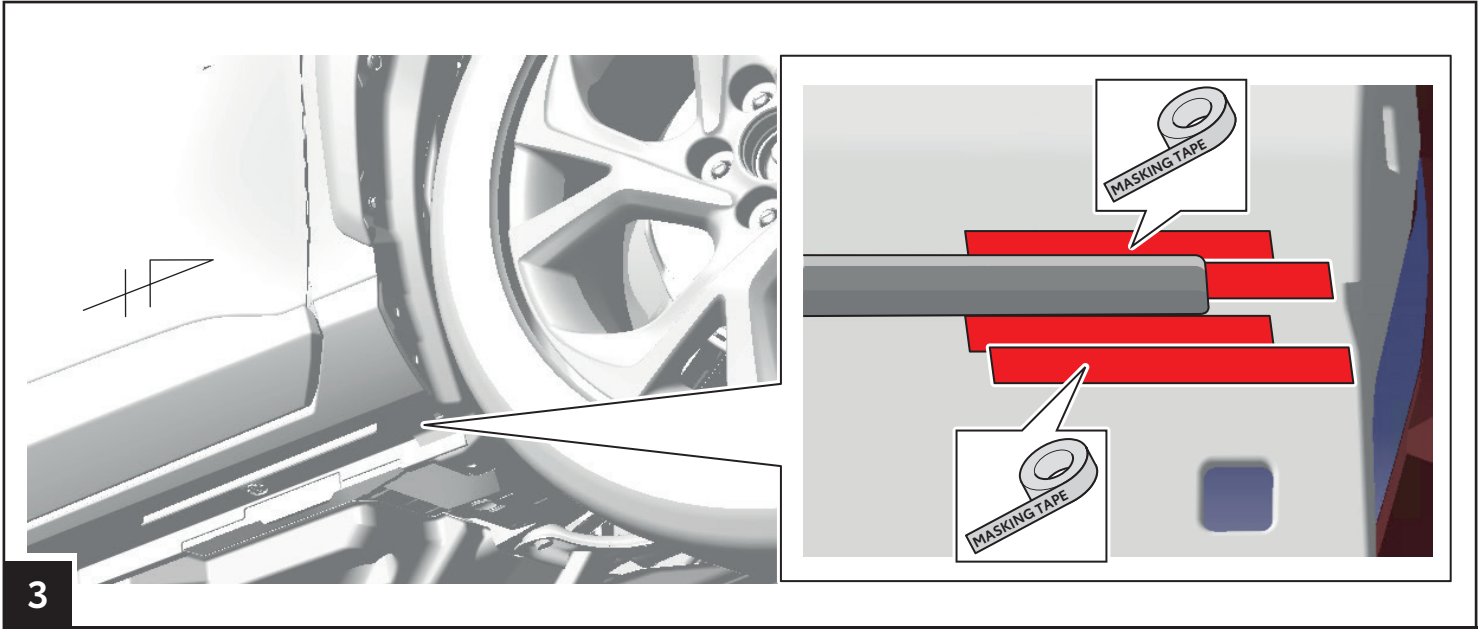
LHS

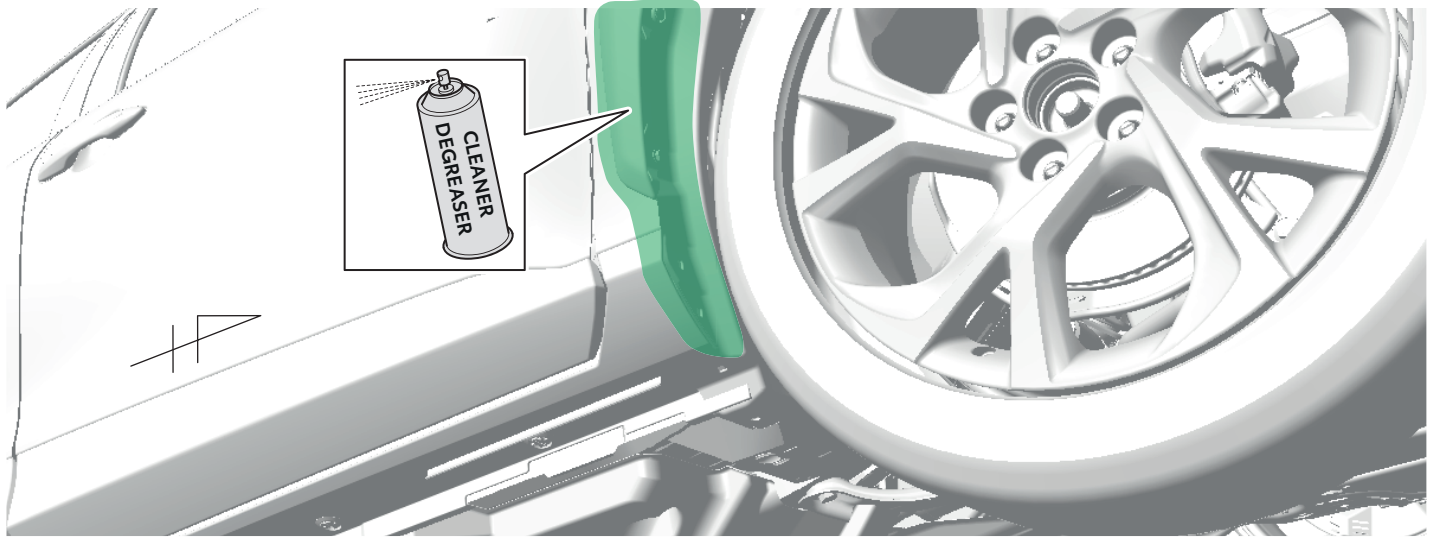


1

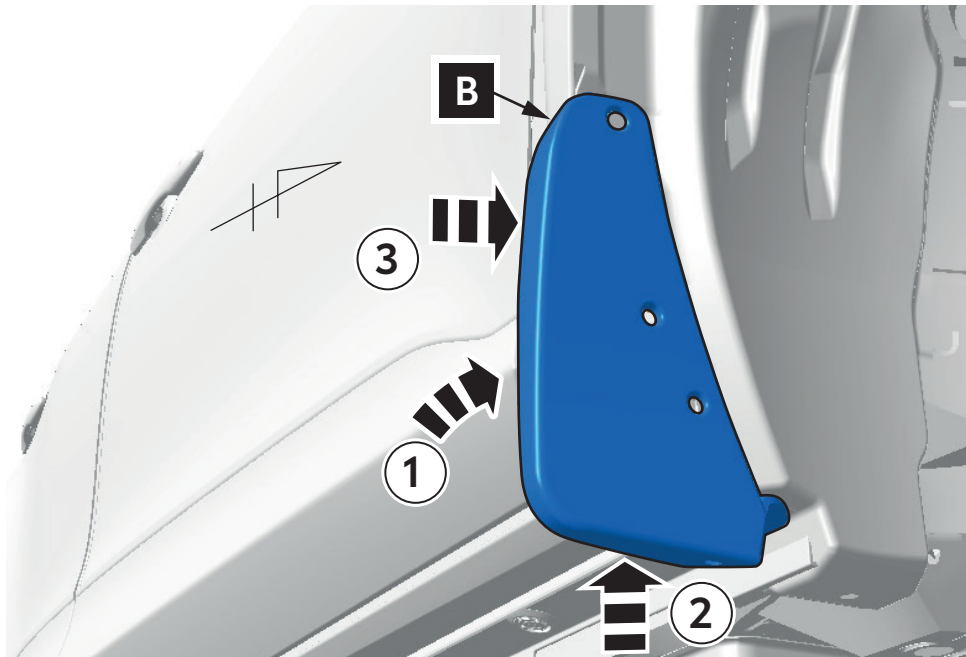


2

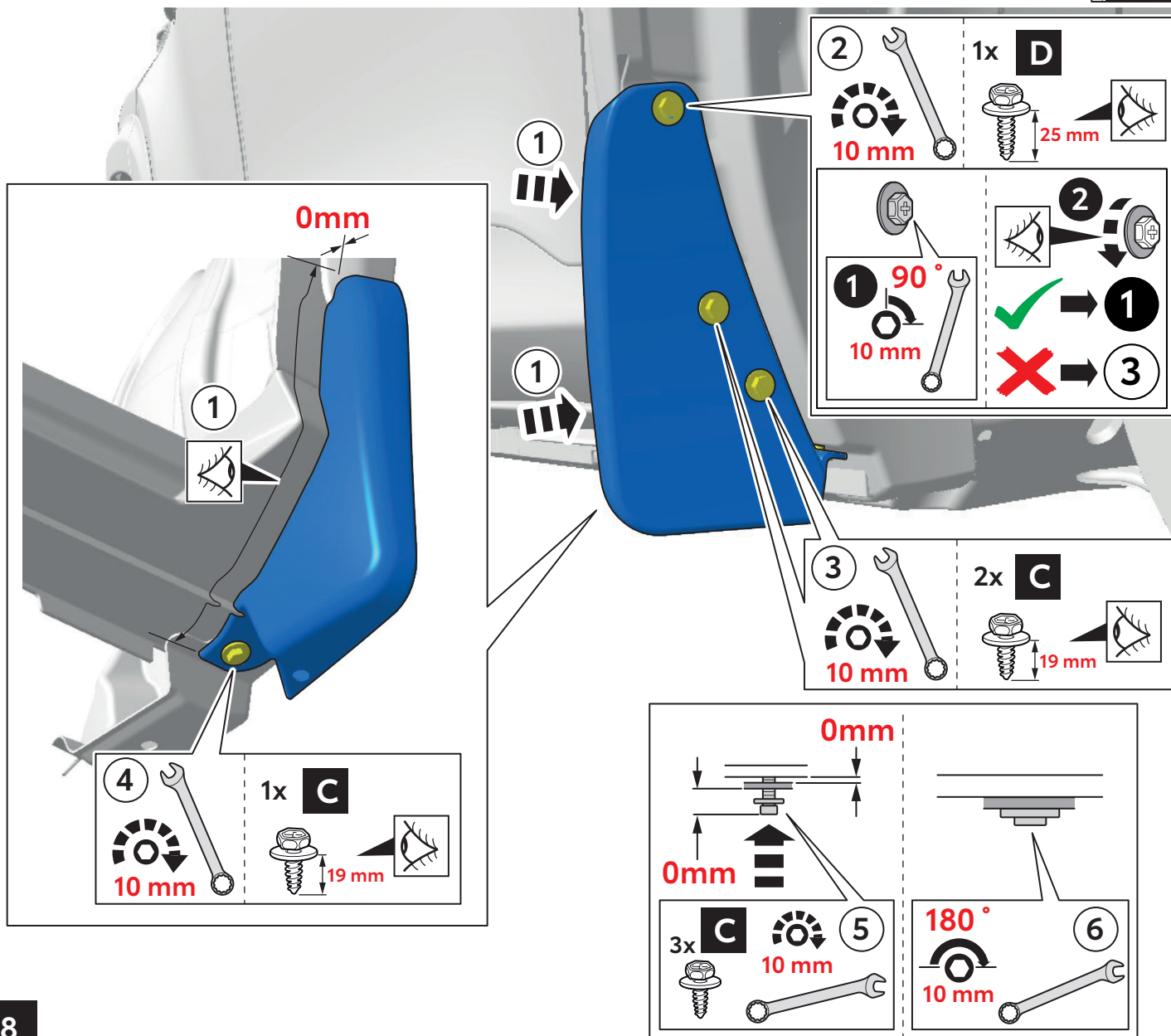




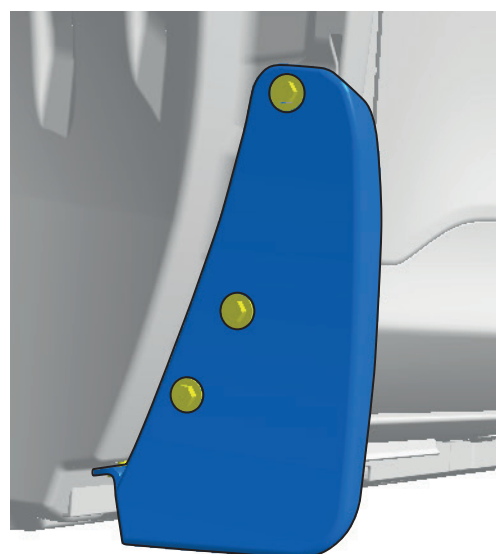
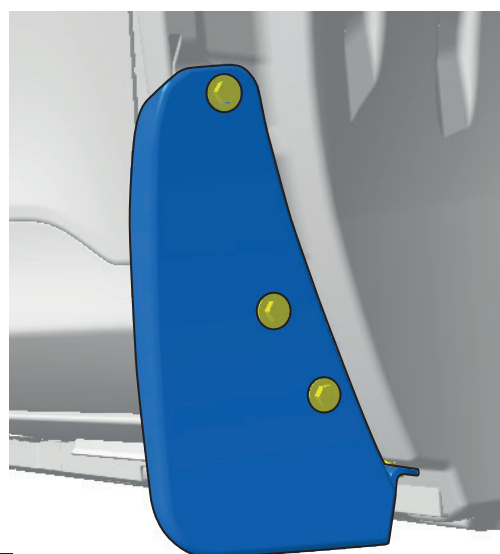
6



7



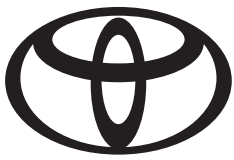
8



RHS = LHS

(Eye icon) **1 - 8**

9



CHECK SHEET

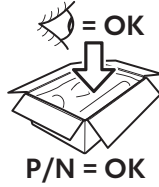
Page 1 of 1

Model/Year **Yaris Cross**
as from 2021/05

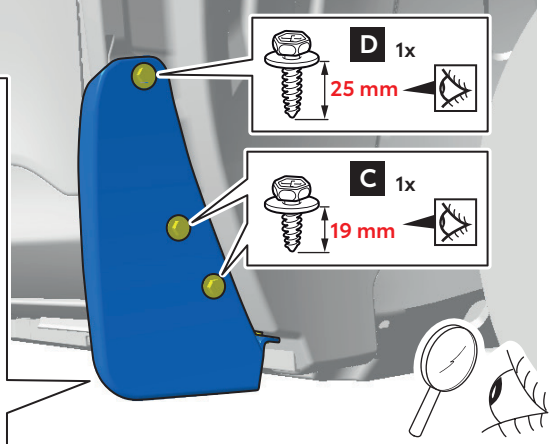
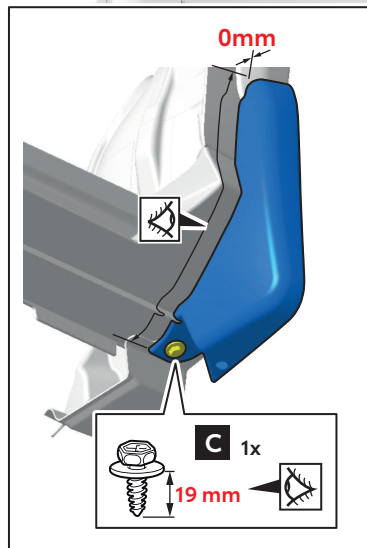
Front Mudflaps

VINn°

DURING INSTALLATION



1

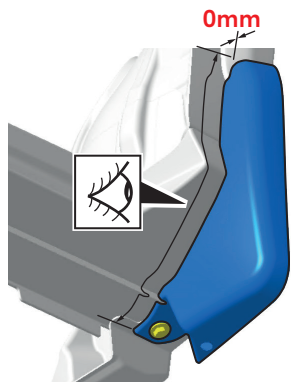


= OK

LHS RHS

2

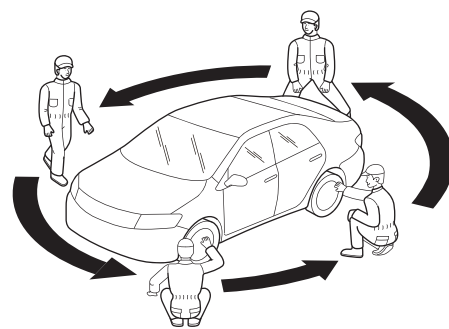
AFTER INSTALLATION



= OK

LHS RHS

1



= OK

2

Installation Date:

.. / .. /

Technician Name & Signature:

Stamp: